

# The Future of Living, Prefab Today



Selected projects

2022–2026

TLC<sup>EU</sup> Unit



# Selected projects 2022-2026

---

Premium modular homes  
manufactured and designed by TLC Unit





# Harz Eco Lodges

---

The Harz Eco Lodges investment is a large-scale recreational development executed using high-precision modular technology. The project involves the production and on-site assembly of 84 individual units. 3 distinct building typologies ranging from 50 m<sup>2</sup> to 120 m<sup>2</sup> of usable floor area were designed to accommodate various guest requirements.

## Key features:

High thermal efficiency, large-format glazing and seamless integration of premium amenities (including private saunas and terraces).













See more photos  
on the investment website:

[www.harzecolodges.de/en](http://www.harzecolodges.de/en)





# Naturpott

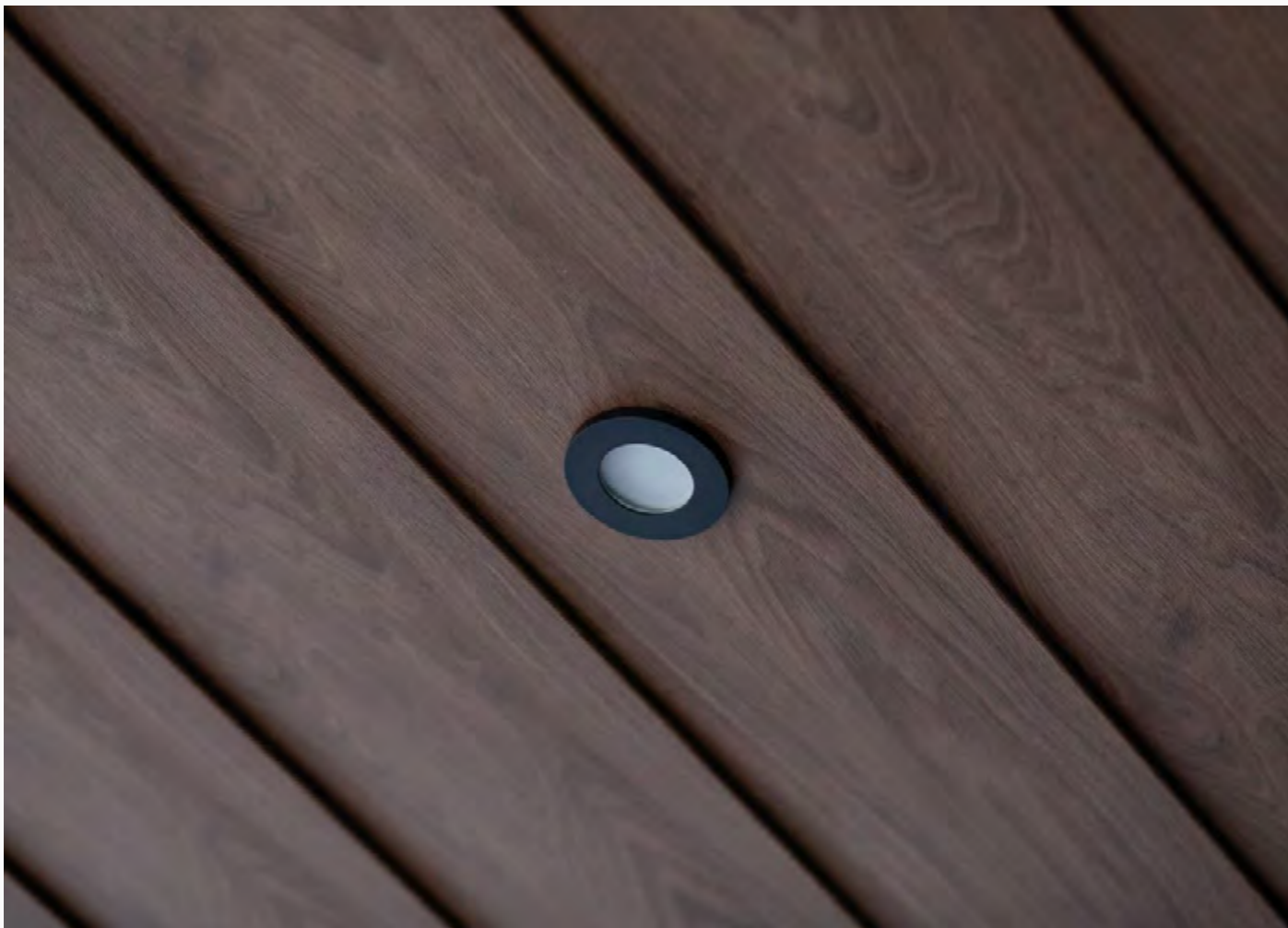
---

Autonomous Modular Homes: A series of standalone, turnkey lodges designed for high-end resorts.

Featuring a unique architectural roofline, integrated private terraces, and designer interiors with bespoke wood accents, the Naturpott units offer a rapid, high-quality solution for independent luxury living in harmony with nature.











# Wilsumer Berge

---

The Wilsumer Berge development represents a harmonious blend of innovative modular technology and a serene, rustic lifestyle. Set within a picturesque landscape of pine forests, heather moorlands, and natural swimming lakes, this project was designed to offer a premium “slow-living” experience while maintaining a minimal environmental footprint.

The realization includes specialized typologies such as the “Nature Lodge” and “Koya” models, tailored for both family vacations and boutique stays.







See more photos  
on the investment website:

[www.wilsumerbergerealestate.com/the-valley](http://www.wilsumerbergerealestate.com/the-valley)





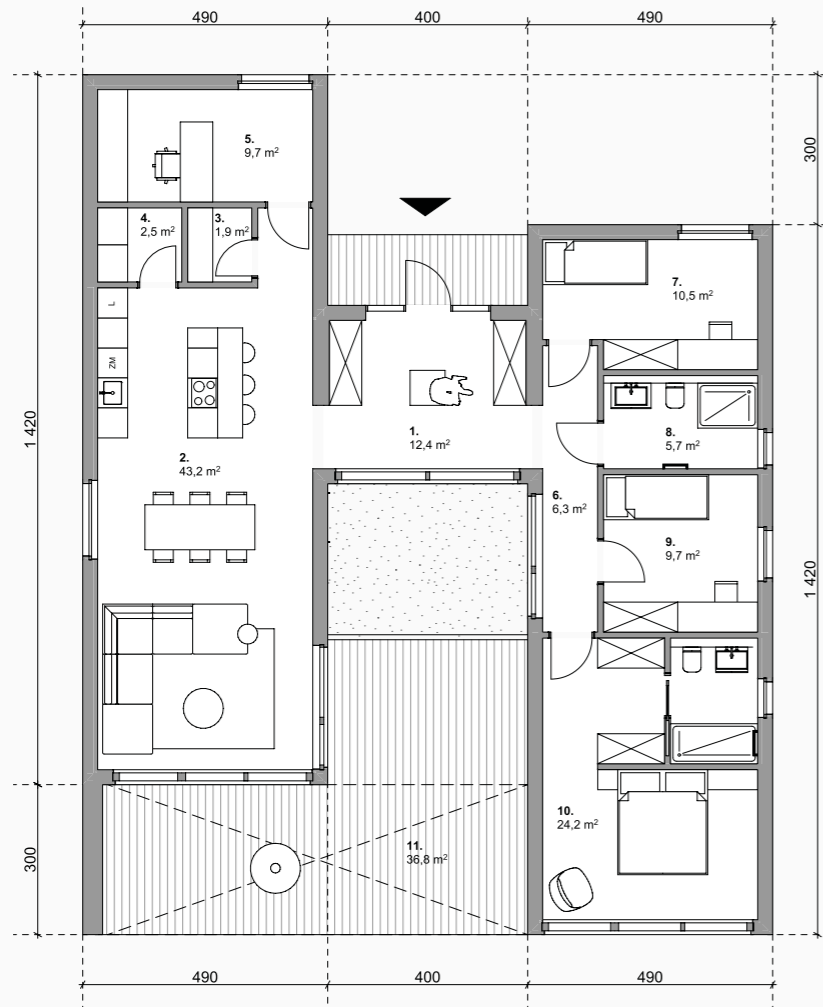
# VB Villa

---

The VB project represents the pinnacle of modular architecture, designed for those who seek the perfect balance between high-end aesthetics and functional autonomy. This luxury residence is a masterpiece of space planning, offering a sophisticated lifestyle in harmony with the environment.

The building's footprint includes a large, sheltered terrace. Integrated directly into the structure, it acts as an outdoor extension of the living room, allowing for year-round enjoyment of the surrounding landscape.







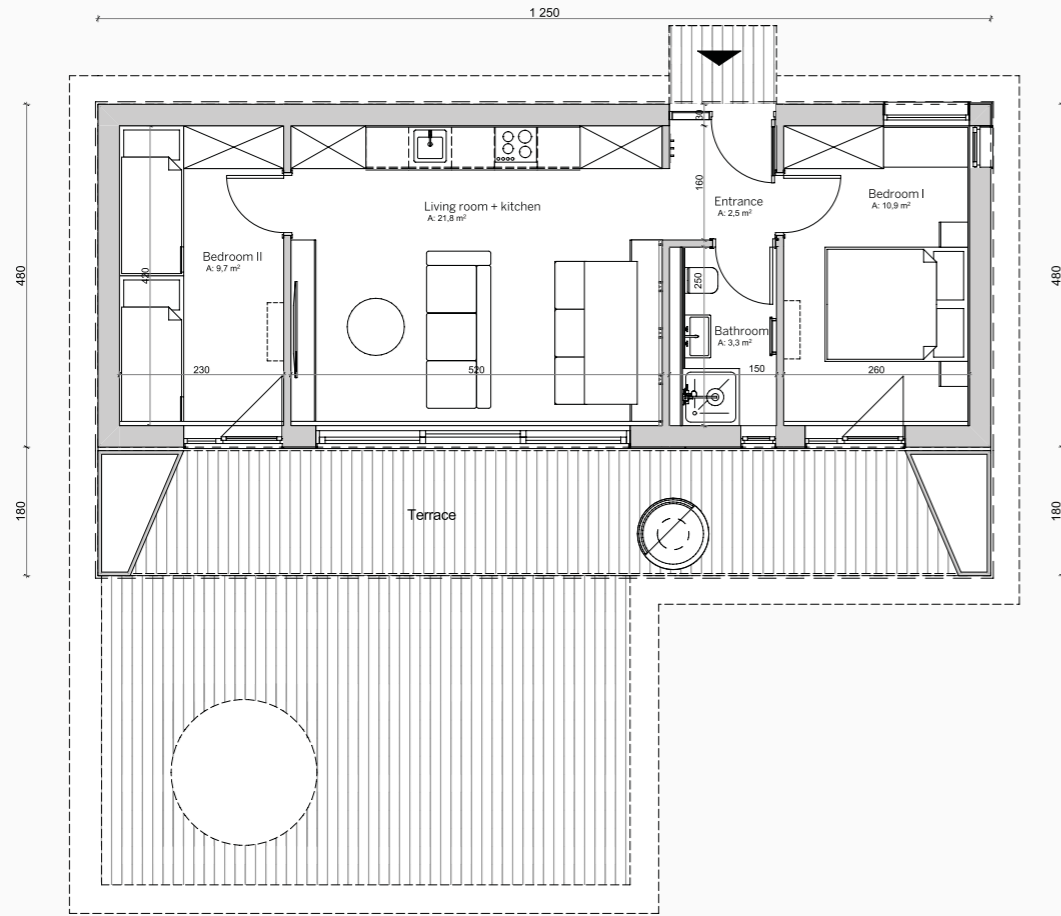
# The Second Home

---

The Second Home project is a contemporary modular retreat designed for those seeking an escape from the urban noise. The interior features a highly adaptable layout, allowing owners to customize the space according to their needs—whether it's a spacious open-plan studio or a multi-room family hideaway.

Large panoramic glass walls ensure that the living space is flooded with natural light, offering an uninterrupted connection to the landscape.







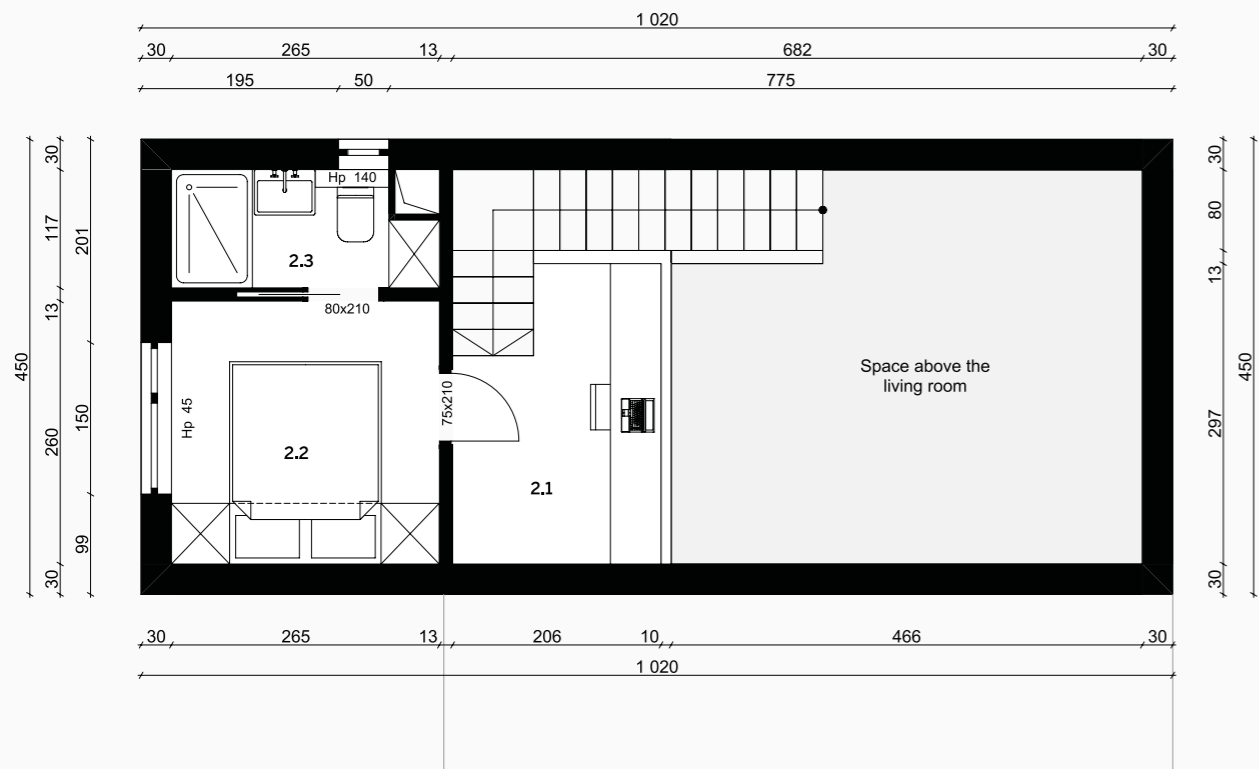
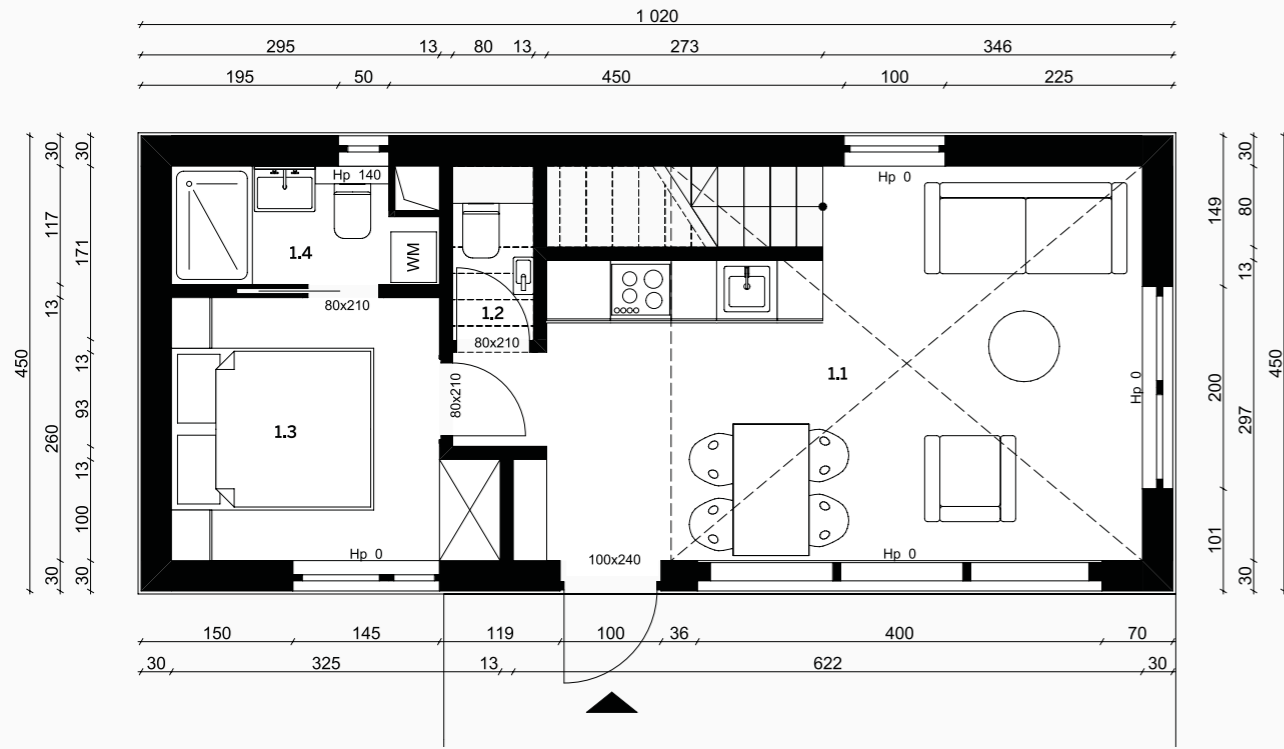
# Netzener Project

---

The Netzner project is a pioneering modular investment designed for environmentally sensitive and protected areas. To minimize the impact on the protected ground, each unit is elevated on a slender pillar structure. This innovative method preserves the natural soil layer and allows the local ecosystem to thrive beneath the home.

The interior features a versatile mezzanine, thoughtfully designed to serve as both a sleeping area and a quiet workspace, optimizing the vertical volume of the building.







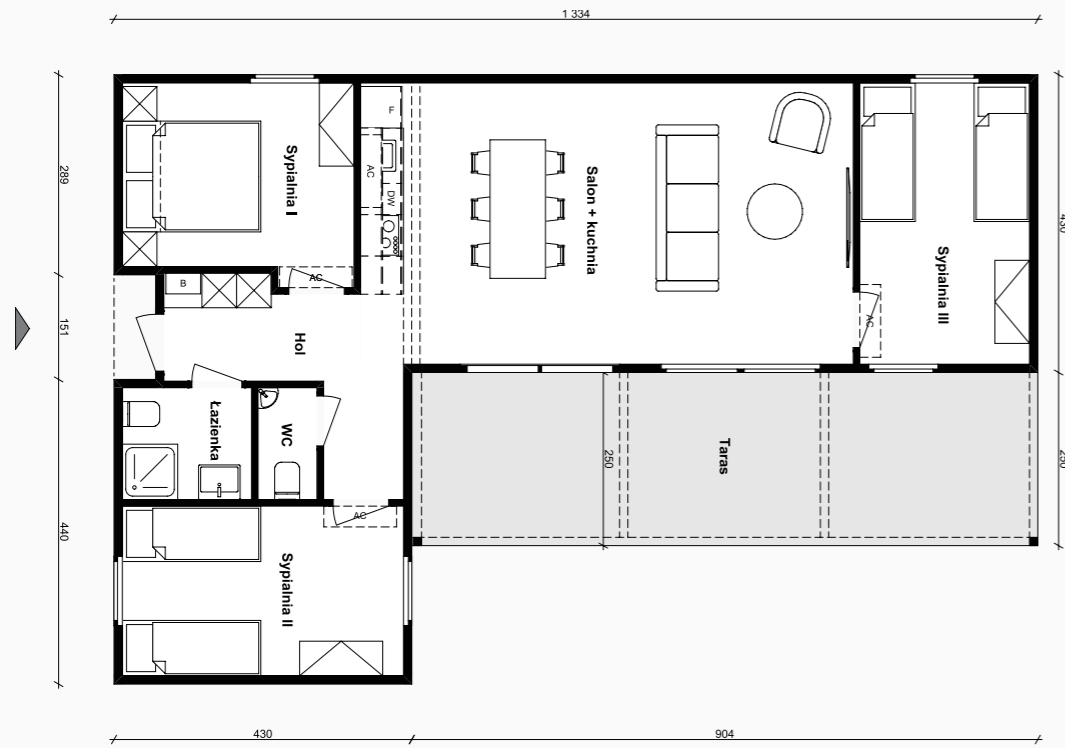
# L-House

---

The L-house is a modular home model engineered for efficiency, offering a spacious and light-filled environment within a rational footprint. It is a perfect solution for those who value modern design paired with practical, everyday functionality. The exterior features high-quality Vinylit cladding with a wood-grain finish.

This choice provides the organic beauty of timber with the added benefits of long-term durability and low maintenance. One of the bedrooms can be seamlessly converted into a dedicated home office.







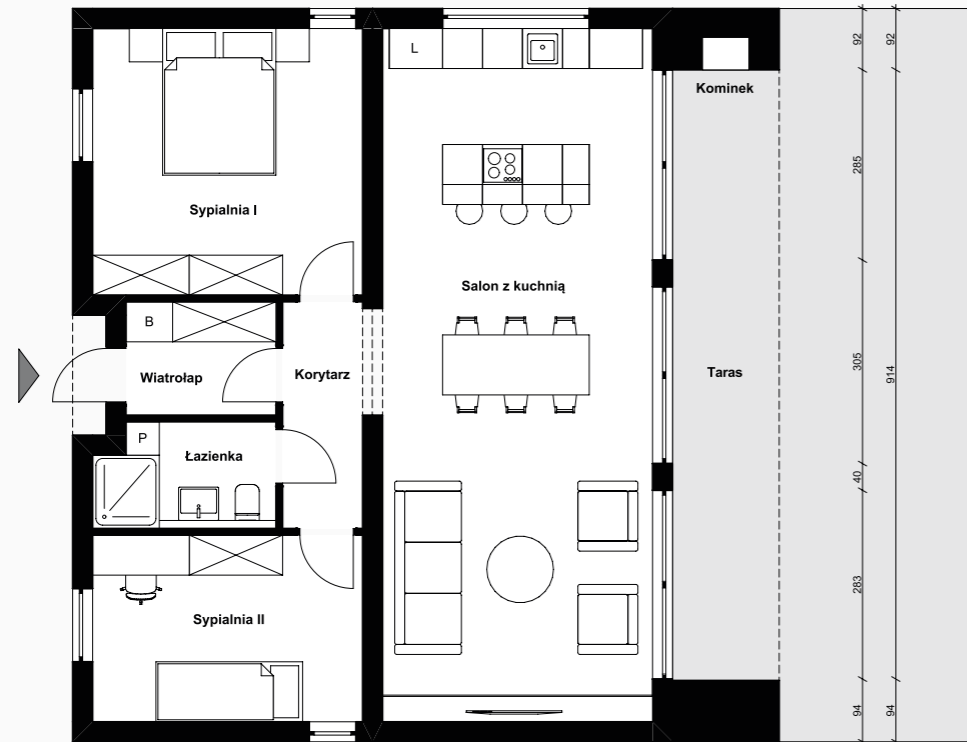
# The Second Home

---

The Showroom House is a sophisticated modular solution designed for urban environments. It combines a clean, geometric form with high-end materials, making it a perfect fit for a modern office, a luxury boutique showroom, or a minimalist city residence.

Designed with future growth in mind, the simple rectangular form allows for easy expansion. Additional modules can be seamlessly integrated to increase the footprint as your needs evolve.







# The Future of Living, Prefab Today

---

TLC UNIT Sp. z o.o.  
Poprzeczna 11 a  
75-841 Koszalin,

+48 538 199 000  
info@tlcunit.eu  
tlcunit.eu

# The Future of Living, Prefab Today



TLC<sup>EU</sup> Unit